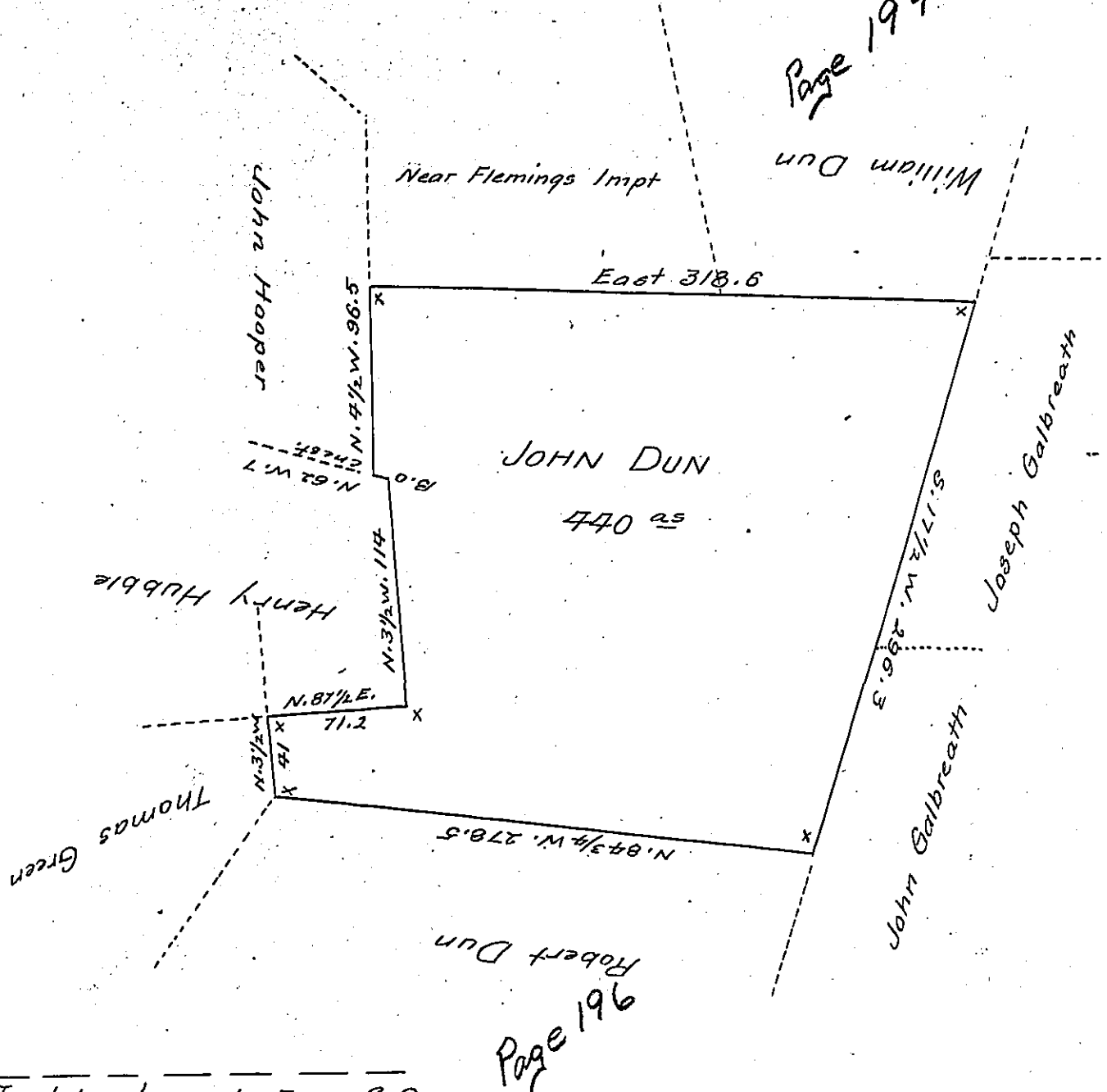


Page 194



Page 195

To John Laporte Esqr. S.G.

Situate in Clay Township Huntingdon County (formerly Bedford) adjoining William Dun, Robert Dun, Thomas Green & others, Containing four-Hundred & forty acres & allowance &c. first surveyed in persuance of a Warrent granted to John Dun, <sup>Dated</sup> the 10<sup>th</sup> day April 1794, Resurveyed & Corrected the 30<sup>th</sup> day of March & day of October-1850

Sam<sup>l</sup> Caldwell D.S.

John Laporte Esqr S.G.

IN TESTIMONY that the above is a copy of the original remaining on file in the Department of Internal Affairs of Pennsylvania, made conformably to an Act of Assembly approved the 16th day of February, 1833, I have hereunto set my Hand and caused the Seal of said Department to be affixed at Harrisburg, this Twenty fifth day of August 1904

*Isaac P. Brown*  
Secretary of Internal Affairs.